

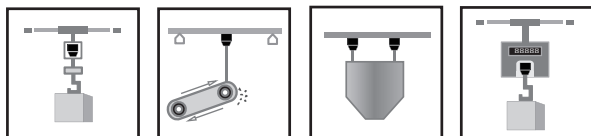
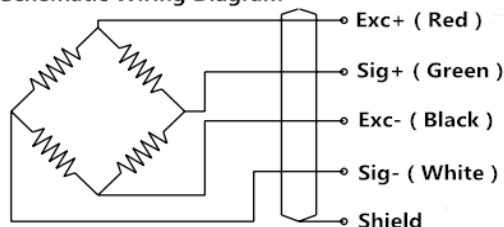
## Features

- Capacities: 25 to 5000kg,
- Alloy steel construction
- Stainless steel available
- Bi-direction(tension/compression)

## Applications

- Electro-mechanical conversion scales
- Crane scales
- Dosing/filling, Universal material tester,
- Tensile/pulling force
- Silo/hopper/tank weighing
- Fork-lift scales

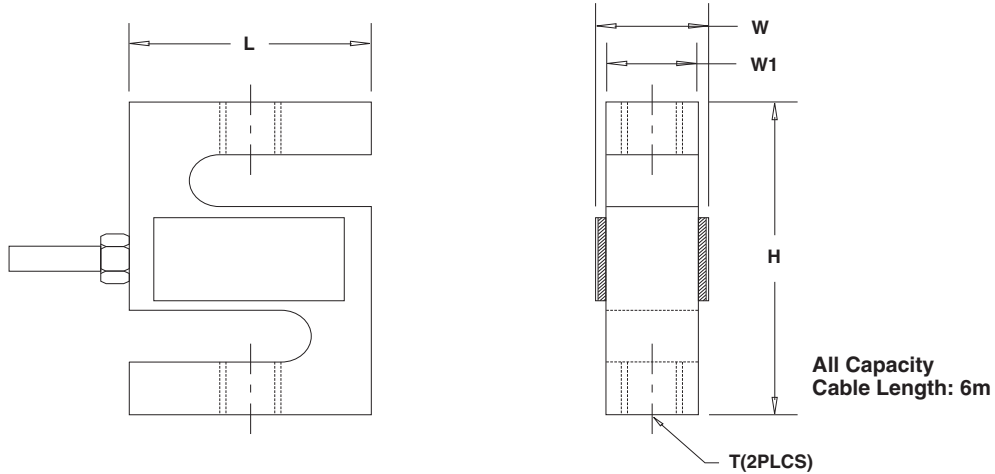
Schematic Wiring Diagram



## Specification

Rated Capacities	25, 50, 75, 100, 250, 500, 750, 1000, 1500, 2000, 2500, 5000kg
Rated Output	3.0 mV/V $\pm$ 0.25%
Zero Balance	1 %R.O.
Non-linearity	0.02 %R.O.
Hysteresis	0.02 %R.O.
Repeatability	0.02 %R.O.
30mins Creep	0.03 %R.O.
30mins Return	0.03 %R.O.
Safe Overload	150 %R.O.
Ultimate Overload	300 %R.O.
Temperature Effect On Output	0.0015 %R.O./ $^{\circ}$ C
Temperature Effect On Zero	0.001 %R.O./ $^{\circ}$ C
Input Impedance	385 $\pm$ 5 $\Omega$
Output Impedance	350 $\pm$ 3 $\Omega$
Insulation Impedance	$\geq$ 5000 M $\Omega$
Recommended Excitation	10 VDC
Maximum Excitation	15 VDC
Operating Temperature Range	-20~60 $^{\circ}$ C
Storage Temperature Range	-30~70 $^{\circ}$ C
Construction	Nickel plated alloy steel
Protection Class	IP67
Cable	6m
Mode of Connection	Red(Exc+),Black(Exc-),Green(Sig+),White(Sig-)

## DIMENSIONS



CAP	Unit	L	W	W1	H	T
25/50/75kg	mm	50.8	26.7	12.7	63.5	M6 x 1.0
100/150kg	mm	50.8	22.92	19.1	76.2	M10 x 1.5
250kg	mm	50.8	30.4	19.1	76.2	M12 x 1.75
500/750kg	mm	50.8	25.4	19.1	76.2	M12 x 1.75
1t,1.5t	mm	50.8	31.8	25.4	76.2	M12 x 1.75
2t,2.5t,5t	mm	76.2	38.1	31.8	100.4	M20 x 1.5

### Wiring diagram

+ Excitation	Red
- Excitation	Black
+ Signal	Green
- Signal	White