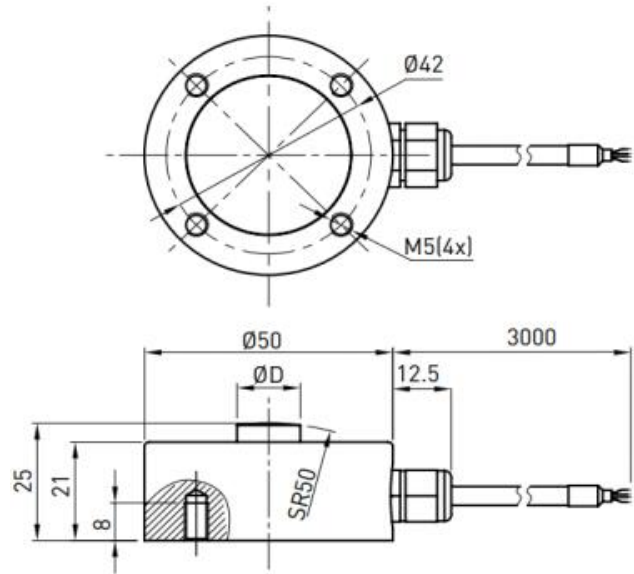


Dimension and Capacity



Features & Applications

- Stainless steel construction. Fully welded seal with stainless steel cover for hostile environment applications, IP67
- Transient force measurement of dynamic stamping equipment Class 0.1%FS
- Used in pressing machine, bearing assembly machine
- Hopper scale and tank scale dynamic weight control

CAP (kg)	SIZE(mm)	D	Material	Weight
20/30/50/100/150/200/300/500 /100 0/1500/2000		13	Stainless steel	0.4kg
3000/5000		16		
6000/7500/10000		21		

Specification

Rated Capacities	20kg-10t
Rated Output	1.5 mV/V±10%
Zero Balance	±3% F.S.
Non-linearity	0.5%F.S.
Hysteresis	0.2%F.S.
Repeatability	0.1%F.S.
30mins Creep	0.05%F.S.
30mins Return	0.05%F.S.
Safe Overload	120 %F.S.
Ultimate Overload	150 %F.S.
Temperature Effect On Output	0.05 %F.S./10°C
Temperature Effect On Zero	0.05 %F.S./10°C
Input Impedance	380±10 Ω
Output Impedance	350±5 Ω
Insulation Impedance	≥5000 MΩ/(100VDC)
Recommended Excitation	5 VDC
Maximum Excitation	15 VDC
Operating Temperature Range	-20~60 °C
Construction	stainless steel
Protection Class	IP67
Cable	3 m
Mode of Connection	Red (EXC+) ,Black (EXC-) ,Green (SIG+) ,White (SIG-)